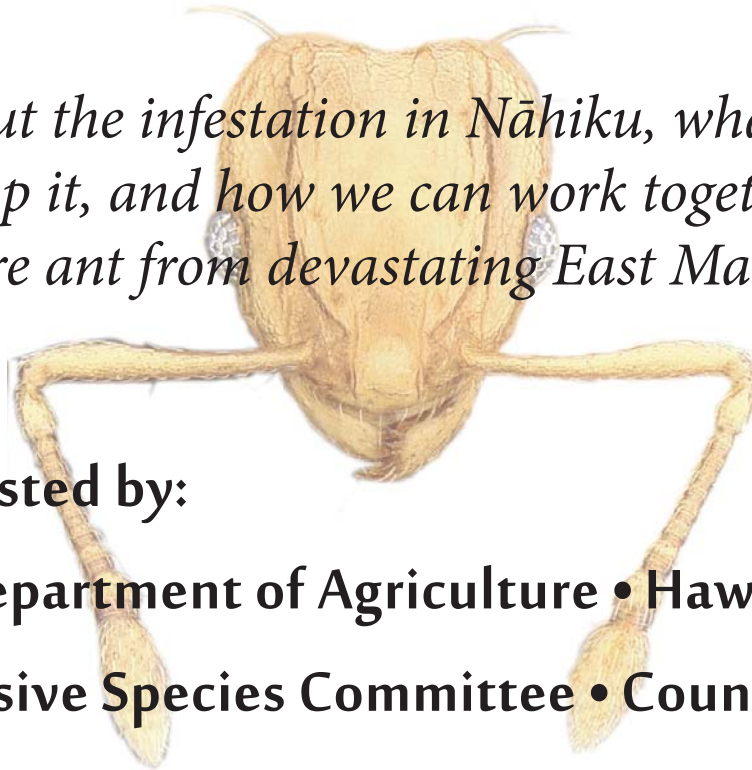


Little Fire Ant COMMUNITY MEETING

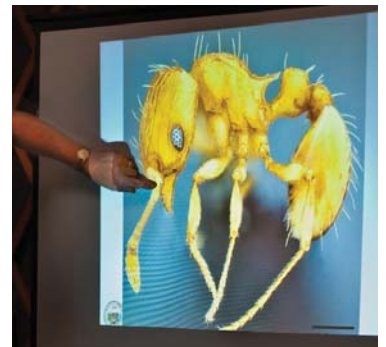
Wednesday, December 10th • 5pm
Helene Hall

Learn about the infestation in Nāhiku, what is being done to stop it, and how we can work together to stop the little fire ant from devastating East Maui.



Meeting hosted by:

- Hawai'i Department of Agriculture • Hawai'i Ant Lab
- Maui Invasive Species Committee • County of Maui



Think you have LFA? Bring in a sample. Instructions at www.lfa-hawaii.org