

Cooperative Agricultural Pest Survey (CAPS) Program

**United States Department of Agriculture
Animal and Plant Health Inspection Service
Plant Protection and Quarantine
and the
Hawaii Department of Agriculture**

Red Imported Fire Ant

**Semiannual Report
FY 2005 (July 1 to December 31, 2005)**

Cooperative Agreement no.

05-8510-0666-CA

February 1, 2006

Prepared by

**Ronald A. Heu, State Survey Coordinator
Troy H. Suh, Biological Technician**

**Hawaii Department of Agriculture
1428 South King Street
Honolulu, Hawaii 96814-2512
Phone (808) 973-9528
FAX (808) 973-9533**

Project Category	Project Description	Completed or current HDOA Actions	Attachment
------------------	---------------------	-----------------------------------	------------

<p>RIFA detection surveys on Hawaii, Oahu, Maui, Kauai</p>	<p><u>Red Imported Fire Ant</u> (RIFA) is an extremely aggressive stinging ant that has invaded states across the mainland U.S. As an agricultural pest and health hazard, it is a pest of major concern to Hawaii. Although not known to occur in Hawaii, the risk of it invading the state is high due to its expansion into California. Early detection of RIFA will allow for eradication strategies to be quickly implemented.</p> <p>The use of Spam-bait vial traps were initiated in 2002 to collect various foraging ants from the field for identification back in the laboratory. These traps have been used elsewhere to collect RIFA specimens.</p> <p>Trapping to detect RIFA in Hawaii continued in 2003 and 2004 on all the major Hawaiian islands using the Spam-bait vial traps.</p> <p>In 2005, RIFA trapping continued and data recorded using the Trimble GIS system.</p>	<p>In 2005, RIFA Spam-bait detection traps were set out at various areas on the islands of Hawaii, Oahu, Maui and Kauai by Hawaii Department of Agriculture (HDOA) staff members. On Hawaii, traps were placed in high traffic areas near airports and harbor areas in Hilo and Kona. On Oahu, high risk ports of entry areas (airport, air cargo, parcel services, containerized shipping areas, military bases, etc.) along with various nurseries and recreational areas around the island were surveyed. On Maui, trapping was conducted in the Kahului area. On Kauai, trapping was done at Kalihiwai on the north shore of the island.</p> <p>For each trap, GIS coordinates were recorded using Trimble or Garmin GPS units. The NAD83 coordinate system was used in order to utilize the State's GIS mapping layers. Each trap was left out on the ground, usually in a shaded area, for a period ranging from 15' to 1 hour. After retrieval of the vial traps, ant specimens were examined by the project staff on each island. Any ants suspected to be RIFA were sent to the HDOA Taxonomist or special-hire ant identifier in Honolulu for identification.</p> <p>Many different species of ants were collected in the vial traps and are listed in the attached data table for Oahu only. None of the ants were identified as RIFA. The data table shows GPS coordinates and other attributes of each Spam-bait trap.</p>	<p>Attachment #1. RIFA data table listing sites on Oahu where RIFA detection surveys were conducted. All sites were negative for RIFA.</p> <p>Attachment #2. Map of Oahu showing RIFA survey sites.</p>
---	--	--	--

<p>RIFA survey data entry into NAPIS</p>		<p>Negative RIFA data from 38 sites on Oahu representing 411 Spam-bait vial traps were entered into NAPIS. Data entry for the neighbor islands has not been completed.</p>	
---	--	--	--

Red Imported Fire Ant and Little Fire Ant Detections Surveys on Oahu, 2005

DATE	ISLE	AREA	SITE	SPECIFIC SITE	X (East)	Y (North)	NAD 83 ZONE #	VIAL	NEARBY PLANTS	ANT SPP	RIFA	LFA	Survey by	ID by
HONOLULU HARBOR PIER-39														
1/4/2005	Oahu	Honolulu	Harbor, Pier 39	around fence area	615977	2358216	4	1	weeds	Monomorium destructor 10	NO	NO	TS/ RT	BK
1/4/2005	Oahu	Honolulu	Harbor, Pier 39	parking lot	615979	2358221	4	2	n/a	Cardiocondyla wroughtoni 1	NO	NO	TS/ RT	BK
1/4/2005	Oahu	Honolulu	Harbor, Pier 39	parking lot	615992	2358242	4	3	n/a	Tetramorium simillimum 1	NO	NO	TS/ RT	BK
1/4/2005	Oahu	Honolulu	Harbor, Pier 39	around fence area	616001	2358261	4	4	weeds	Monomorium destructor 40	NO	NO	TS/ RT	BK
1/4/2005	Oahu	Honolulu	Harbor, Pier 39	parking lot	616044	2358300	4	5	yellow shower	Monomorium destructor 60	NO	NO	TS/ RT	BK
1/4/2005	Oahu	Honolulu	Harbor, Pier 39	parking lot	616027	2358299	4	6	n/a	Monomorium destructor 150	NO	NO	TS/ RT	BK
1/4/2005	Oahu	Honolulu	Harbor, Pier 39	around fence area	616057	2358292	4	7	weeds	Monomorium destructor 250	NO	NO	TS/ RT	BK
1/4/2005	Oahu	Honolulu	Harbor, Pier 39	parking lot	616068	2358285	4	8	n/a	Solenopsis geminata 15	NO	NO	TS/ RT	BK
1/4/2005	Oahu	Honolulu	Harbor, Pier 39	landscape	616079	2358277	4	9	yellow shower	Pheidole megacephala 20	NO	NO	TS/ RT	BK
1/4/2005	Oahu	Honolulu	Harbor, Pier 39	by cars	616079	2358269	4	10	n/a	Pheidole megacephala 150	NO	NO	TS/ RT	BK
KAPALAMA MILITARY RESERVATION WAREHOUSE (SAND ISLAND)														
1/6/2005	Oahu	Honolulu	Kapalama Ml. Res.	auto storage, nr fence	615154	2357759	4	1	weeds	none	n/a	n/a	TS/ RT	BK
1/6/2005	Oahu	Honolulu	Kapalama Ml. Res.	nr cargo container	615146	2357778	4	2	n/a	none	n/a	n/a	TS/ RT	BK
1/6/2005	Oahu	Honolulu	Kapalama Ml. Res.	warehouse	615163	2357745	4	3	n/a	Solenopsis geminata 120	NO	NO	TS/ RT	BK
1/6/2005	Oahu	Honolulu	Kapalama Ml. Res.	auto storage, nr fence	615167	2357734	4	4	weeds	Solenopsis geminata 100	NO	NO	TS/ RT	BK
1/6/2005	Oahu	Honolulu	Kapalama Ml. Res.	auto storage, nr car	615169	2357729	4	5	n/a	Solenopsis geminata 250	NO	NO	TS/ RT	BK
1/6/2005	Oahu	Honolulu	Kapalama Ml. Res.	auto storage, nr fence	615179	2357711	4	6	weeds	Monomorium destructor 6	NO	NO	TS/ RT	BK
1/6/2005	Oahu	Honolulu	Kapalama Ml. Res.	auto storage, nr car	615183	2357703	4	7	n/a	Solenopsis geminata 100	NO	NO	TS/ RT	BK
1/6/2005	Oahu	Honolulu	Kapalama Ml. Res.	auto storage, nr fence	615185	2357693	4	8	weeds	Solenopsis geminata 100	NO	NO	TS/ RT	BK
1/6/2005	Oahu	Honolulu	Kapalama Ml. Res.	auto storage, nr car	615191	2357688	4	9	n/a	Solenopsis geminata 10	NO	NO	TS/ RT	BK
1/6/2005	Oahu	Honolulu	Kapalama Ml. Res.	auto storage, nr fence	615195	2357681	4	10	weeds	Solenopsis geminata 80	NO	NO	TS/ RT	BK
HONOLULU INTERNATIONAL AIRPORT GATE-12														
1/12/2005	Oahu	Honolulu	HIA, Gate-12	Landscape Area	612249	2359171	4	1	ti leaf	Monomorium destructor 250	NO	NO	TS/ RT	BK
1/12/2005	Oahu	Honolulu	HIA, Gate-12	Landscape Area	612242	2359170	4	2	palm tree	Monomorium destructor 120	NO	NO	TS/ RT	BK
1/12/2005	Oahu	Honolulu	HIA, Gate-12	Landscape Area	612232	2359172	4	3	croton	Monomorium destructor 200	NO	NO	TS/ RT	BK
1/12/2005	Oahu	Honolulu	HIA, Gate-12	Landscape Area	612223	2359176	4	4	plumeria	Solenopsis geminata 100	NO	NO	TS/ RT	BK
1/12/2005	Oahu	Honolulu	HIA, Gate-12	Landscape Area	612225	2359186	4	5	palm tree	none	n/a	n/a	TS/ RT	BK
1/12/2005	Oahu	Honolulu	HIA, Gate-12	Landscape Area	612223	2359177	4	6	plumeria	Solenopsis geminata 80	NO	NO	TS/ RT	BK
1/12/2005	Oahu	Honolulu	HIA, Gate-12	Side of Building	612212	2359167	4	7	weeds	Monomorium destructor 80	NO	NO	TS/ RT	BK
1/12/2005	Oahu	Honolulu	HIA, Gate-12	Terminal Dock Area	612204	2359171	4	8	weeds	Monomorium destructor 150	NO	NO	TS/ RT	BK
1/12/2005	Oahu	Honolulu	HIA, Gate-12	Terminal Dock Area	612199	2359161	4	9	ti leaf	Monomorium destructor 200	NO	NO	TS/ RT	BK
1/12/2005	Oahu	Honolulu	HIA, Gate-12	Terminal Dock Area	612200	2359169	4	10	n/a	Monomorium destructor 250	NO	NO	TS/ RT	BK
HAWAIIAN AIR CARGO WAREHOUSE														
1/24/2005	Oahu	Honolulu	HIA, Haw. Air Cargo	Around Empty Lot	611273	2359545	4	1	weeds	Monomorium pharaonis 10	NO	NO	TS	BK
1/24/2005	Oahu	Honolulu	HIA, Haw. Air Cargo	Next to Fence	611278	2359546	4	2	weeds	none	n/a	n/a	TS	BK
1/24/2005	Oahu	Honolulu	HIA, Haw. Air Cargo	Next to Container	611277	2359548	4	3	weeds	none	n/a	n/a	TS	BK
1/24/2005	Oahu	Honolulu	HIA, Haw. Air Cargo	Around Container	611281	2359548	4	4	weeds	none	n/a	n/a	TS	BK
1/24/2005	Oahu	Honolulu	HIA, Haw. Air Cargo	Next to Fence	611284	2359544	4	5	n/a	none	n/a	n/a	TS	BK
1/24/2005	Oahu	Honolulu	HIA, Haw. Air Cargo	Around Container	611286	2359543	4	6	n/a	none	n/a	n/a	TS	BK
1/24/2005	Oahu	Honolulu	HIA, Haw. Air Cargo	Around Container	611290	2359543	4	7	n/a	none	n/a	n/a	TS	BK
1/24/2005	Oahu	Honolulu	HIA, Haw. Air Cargo	Next to Fence	611290	2359550	4	8	weeds	Monomorium pharaonis 20	NO	NO	TS	BK
1/24/2005	Oahu	Honolulu	HIA, Haw. Air Cargo	Next to Container	611278	2359551	4	9	n/a	none	n/a	n/a	TS	BK
1/24/2005	Oahu	Honolulu	HIA, Haw. Air Cargo	Next to Fence Area	611270	2359557	4	10	weeds	Solenopsis geminata 2	NO	NO	TS	BK

U.H. TROPICAL URBAN GARDEN CENTER (PEARL CITY)														
1/27/2005	Oahu	Pearl City	Urban Garden Cntr	plumeria tree Garden	606269	2365983	4	1-5	plumeria tree	Solenopsis geminata 86	NO	NO	TS/ RT	BK
1/27/2005	Oahu	Pearl City	Urban Garden Cntr	plumeria tree Garden	606281	2365949	4	6-7	plumeria tree	Solenopsis geminata 11	NO	NO	TS/ RT	BK
1/27/2005	Oahu	Pearl City	Urban Garden Cntr	plumeria tree Garden	606292	2365953	4	8-10	plumeria tree	Solenopsis geminata 36	NO	NO	TS/ RT	BK
KEHE POINT AT KAPOLEI DISTRICT														
2/10/2005	Oahu	Kapoleil	Kahe Point	C&C park, picnic area	590199	2361483	4	1	grass	Solenopsis geminata 3	NO	NO	TS	BK
2/10/2005	Oahu	Kapoleil	Kahe Point	C&C park, picnic area	590199	2361483	4	2	grass	Solenopsis geminata 8	NO	NO	TS	BK
2/10/2005	Oahu	Kapoleil	Kahe Point	C&C park, picnic area	590199	2361483	4	3	grass	Solenopsis geminata 7	NO	NO	TS	BK
2/10/2005	Oahu	Kapoleil	Kahe Point	C&C park, picnic area	590199	2361483	4	4	grass	Solenopsis geminata 20	NO	NO	TS	BK
2/10/2005	Oahu	Kapoleil	Kahe Point	C&C park, picnic area	590199	2361483	4	5	grass	Tetramorium simillimum 5	NO	NO	TS	BK
BELLOWS AIR FORCE BEACH PARK (WAIMANALO DISTRICT)														
3/15/2005	Oahu	Waimanalo	Bellows	camp ground	633909	2364282	4	1	grass	Solenopsis geminata 60	NO	NO	TS	BK
3/15/2005	Oahu	Waimanalo	Bellows	camp ground, pic. table	633941	2364266	4	2	grass	Solenopsis geminata 70	NO	NO	TS	BK
3/15/2005	Oahu	Waimanalo	Bellows	camp ground, pic. table	633956	2364270	4	3	grass	Solenopsis geminata 10	NO	NO	TS	BK
3/15/2005	Oahu	Waimanalo	Bellows	camp ground, nr grill	633969	2364253	4	4	n/a	Solenopsis geminata 100	NO	NO	TS	BK
3/15/2005	Oahu	Waimanalo	Bellows	camp ground	633971	2364243	4	5	pine tree	Monomorium liliuokalanii 1	NO	NO	TS	BK
3/15/2005	Oahu	Waimanalo	Bellows	camp ground, pic. table	633825	2364190	4	6	grass	Solenopsis geminata 6	NO	NO	TS	BK
3/15/2005	Oahu	Waimanalo	Bellows	camp ground	633845	2364182	4	7	grass	Solenopsis geminata 4	NO	NO	TS	BK
3/15/2005	Oahu	Waimanalo	Bellows	camp ground	633869	2364171	4	8	pine tree	Tapinoma melanocephalum 2	NO	NO	TS	BK
3/15/2005	Oahu	Waimanalo	Bellows	camp ground, pic. table	633881	2364182	4	9	grass	Tetramorium simillimum 50	NO	NO	TS	BK
3/15/2005	Oahu	Waimanalo	Bellows	camp ground	633892	2364190	4	10	pine tree	Tetramorium simillimum 10	NO	NO	TS	BK
WAIMANALO DISTRICT AREAS														
3/17/2005	Oahu	Waimanalo	Warren Yee Nurs.	Greenhouses	630626	2360047	4	1	various plants	Technomyrmex albipes	NO	NO	TS/RH	BK
3/17/2005	Oahu	Waimanalo	Warren Yee Nurs.	Greenhouses	630626	2360047	4	2	various plants	Technomyrmex albipes	NO	NO	TS/RH	BK
3/17/2005	Oahu	Waimanalo	Warren Yee Nurs.	Greenhouses	630626	2360047	4	3	various plants	Technomyrmex albipes	NO	NO	TS/RH	BK
3/17/2005	Oahu	Waimanalo	Warren Yee Nurs.	Greenhouses	630626	2360047	4	4	various plants	Technomyrmex albipes	NO	NO	TS/RH	BK
3/17/2005	Oahu	Waimanalo	Warren Yee Nurs.	Greenhouses	630626	2360047	4	5	various plants	Technomyrmex albipes	NO	NO	TS/RH	BK
3/17/2005	Oahu	Waimanalo	Warren Yee Nurs.	Greenhouses	630626	2360047	4	6	various plants	Technomyrmex albipes	NO	NO	TS/RH	BK
3/17/2005	Oahu	Waimanalo	Warren Yee Nurs.	Greenhouses	630626	2360047	4	7	various plants	Technomyrmex albipes	NO	NO	TS/RH	BK
3/17/2005	Oahu	Waimanalo	Warren Yee Nurs.	Greenhouses	630626	2360047	4	8	various plants	Technomyrmex albipes	NO	NO	TS/RH	BK
3/17/2005	Oahu	Waimanalo	Warren Yee Nurs.	Greenhouses	630626	2360047	4	9	various plants	Technomyrmex albipes	NO	NO	TS/RH	BK
3/17/2005	Oahu	Waimanalo	Warren Yee Nurs.	Greenhouses	630626	2360047	4	10	various plants	Technomyrmex albipes	NO	NO	TS/RH	BK
3/17/2005	Oahu	Waimanalo	Warren Yee Nurs.	Greenhouses	630626	2360047	4	11	various plants	Technomyrmex albipes	NO	NO	TS/RH	BK
3/17/2005	Oahu	Waimanalo	Warren Yee Nurs.	Greenhouses	630626	2360047	4	12	various plants	Technomyrmex albipes	NO	NO	TS/RH	BK
3/17/2005	Oahu	Waimanalo	Warren Yee Nurs.	Greenhouses	630626	2360047	4	13	various plants	Technomyrmex albipes	NO	NO	TS/RH	BK
3/17/2005	Oahu	Waimanalo	Contemporary Nurs.	Greenhouses	631628	2359755	4	1	various plants	Tetramorium simillimum	NO	NO	TS/RH	BK
3/17/2005	Oahu	Waimanalo	Contemporary Nurs.	Greenhouses	631628	2359755	4	2	various plants	Pheidole megacephala	NO	NO	TS/RH	BK
3/17/2005	Oahu	Waimanalo	Contemporary Nurs.	Greenhouses	631628	2359755	4	3	various plants	Tetramorium simillimum	NO	NO	TS/RH	BK
3/17/2005	Oahu	Waimanalo	Contemporary Nurs.	Greenhouses	631628	2359755	4	4	various plants	Pheidole megacephala	NO	NO	TS/RH	BK
3/17/2005	Oahu	Waimanalo	Contemporary Nurs.	Greenhouses	631628	2359755	4	5	various plants	Tetramorium simillimum	NO	NO	TS/RH	BK
3/17/2005	Oahu	Waimanalo	Contemporary Nurs.	Greenhouses	631628	2359755	4	6	various plants	Pheidole megacephala	NO	NO	TS/RH	BK
3/17/2005	Oahu	Waimanalo	Contemporary Nurs.	Greenhouses	631628	2359755	4	7	various plants	Tetramorium simillimum	NO	NO	TS/RH	BK
3/17/2005	Oahu	Waimanalo	Contemporary Nurs.	Greenhouses	631628	2359755	4	8	various plants	Pheidole megacephala	NO	NO	TS/RH	BK
3/17/2005	Oahu	Waimanalo	Contemporary Nurs.	Greenhouses	631628	2359755	4	9	various plants	Tetramorium simillimum	NO	NO	TS/RH	BK
3/17/2005	Oahu	Waimanalo	Contemporary Nurs.	Greenhouses	631628	2359755	4	10	various plants	Pheidole megacephala	NO	NO	TS/RH	BK
LAGOON DRIVE NEAR HONOLULU AIRPORT														
3/23/2005	Oahu	Honolulu	HIA - Post Office	Landscape Areas	612651	2357867	4	1	plumeria	Pheidole megacephala 100	NO	NO	TS	BK
3/23/2005	Oahu	Honolulu	HIA - Post Office	Landscape Areas	612652	2357863	4	2	oeander	Pheidole megacephala 200	NO	NO	TS	BK
3/23/2005	Oahu	Honolulu	HIA - Post Office	Landscape Areas	612656	2357844	4	3	ti leaf	Pheidole megacephala 40	NO	NO	TS	BK
3/23/2005	Oahu	Honolulu	HIA - Post Office	Parking Lot	612668	2357843	4	4	oeander	Pheidole megacephala 200	NO	NO	TS	BK
3/23/2005	Oahu	Honolulu	HIA - Post Office	By Trash Bin	612678	2357830	4	5	Hilo grass	Pheidole megacephala 250	NO	NO	TS	BK
3/23/2005	Oahu	Honolulu	HIA - Post Office	By Parking Lot	612697	2357809	4	6	oeander	Pheidole megacephala 15	NO	NO	TS	BK

3/23/2005	Oahu	Honolulu	HIA - Post Office	Landscape Area	612701	2357803	4	7	palm tree	Pheidole megacephala 2	NO	NO	TS	BK
3/23/2005	Oahu	Honolulu	HIA - Post Office	Landscape Areas	612719	2357778	4	8	oeander	Monomorium pharaonis 2	NO	NO	TS	BK
3/23/2005	Oahu	Honolulu	HIA - Post Office	By Parking Lot	612721	2357774	4	9	n/a	Pheidole megacephala 250	NO	NO	TS	BK
3/23/2005	Oahu	Honolulu	HIA - Post Office	By Parking Lot	612723	2357770	4	10	Hilo grass	Pheidole megacephala 300	NO	NO	TS	BK
HONOLULU INTERNATIONAL AIRPORT (DALTA AIRLINE CARGO)														
4/7/2005	Oahu	Honolulu	HIA - Delta Cargo	Warehouse	612948	2359312	4	1	grass	Solenopsis geminata 120	NO	NO	TS	BK
4/7/2005	Oahu	Honolulu	HIA - Delta Cargo	Landscape Area	612957	2359322	4	2	grass	none	n/a	n/a	TS	BK
4/7/2005	Oahu	Honolulu	HIA - Delta Cargo	Warehouse	612946	2359324	4	3	palm tree	none	n/a	n/a	TS	BK
4/7/2005	Oahu	Honolulu	HIA - Delta Cargo	Cargo Container	612983	2359315	4	4	n/a	Tapinoma melanocephalum 20	NO	NO	TS	BK
4/7/2005	Oahu	Honolulu	HIA - Delta Cargo	Next to Container	612980	2359312	4	5	n/a	none	n/a	n/a	TS	BK
4/7/2005	Oahu	Honolulu	HIA - Delta Cargo	Next to Warehouse	612979	2359289	4	6	ti leaf	Cardiocondyla wroughtoni 1	NO	NO	TS	BK
4/7/2005	Oahu	Honolulu	HIA - Delta Cargo	Next to Pallets	612958	2359283	4	7	n/a	Tetramorium simillimum 3	NO	NO	TS	BK
4/7/2005	Oahu	Honolulu	HIA - Delta Cargo	Next to Pallets	612951	2359287	4	8	n/a	none	n/a	n/a	TS	BK
4/7/2005	Oahu	Honolulu	HIA - Delta Cargo	Next to Empty Cargo	612945	2359307	4	9	n/a	Solenopsis geminata 4	NO	NO	TS	BK
4/7/2005	Oahu	Honolulu	HIA - Delta Cargo	Next to Empty Cargo	612945	2359307	4	9	n/a	Tetramorium simillimum 2	NO	NO	TS	BK
ALOHA STADIUM (PARKING LOT AREAS)														
4/11/2005	Oahu	Honolulu	Aloha Stadium	Entrance of Gate 6	610706	2363796	4	1	yellow shower	Solenopsis geminata 10	NO	NO	TS/RT	BK
4/11/2005	Oahu	Honolulu	Aloha Stadium	Gate 6 D	610802	2363956	4	2	monkeypod	Solenopsis geminata 100	NO	NO	TS/RT	BK
4/11/2005	Oahu	Honolulu	Aloha Stadium	Gate 9 D	610964	2363999	4	3	monkeypod	none	n/a	n/a	TS/RT	BK
4/11/2005	Oahu	Honolulu	Aloha Stadium	Gate 10 D	611080	2363948	4	4	grass	Solenopsis geminata 15	NO	NO	TS/RT	BK
4/11/2005	Oahu	Honolulu	Aloha Stadium	Gate 11 D	611146	2363855	4	5	coconut tree	Monomorium destructor 70	NO	NO	TS/RT	BK
4/11/2005	Oahu	Honolulu	Aloha Stadium	Gate 12 D	611160	2363745	4	6	grass	none	n/a	n/a	TS/RT	BK
4/11/2005	Oahu	Honolulu	Aloha Stadium	Gate 14 D	611100	2363635	4	7	red dirt	Solenopsis geminata 1	NO	NO	TS/RT	BK
4/11/2005	Oahu	Honolulu	Aloha Stadium	Gate 2 D	610803	2363611	4	8	grass	Technomyrmex albipes 15	NO	NO	TS/RT	BK
4/11/2005	Oahu	Honolulu	Aloha Stadium	Gate 3 D by trash can	610749	2363669	4	9	n/a	none	n/a	n/a	TS/RT	BK
4/11/2005	Oahu	Honolulu	Aloha Stadium	Gate 3 D	610727	2363704	4	10	monkeypod	Monomorium destructor 5	NO	NO	TS/RT	BK
HONOLULU INTERNATIONAL AIRPORT (UNITED AIRLINE CARGO AREA)														
5/2/2005	Oahu	Honolulu	HIA - United Cgo	By the Pallets	613118	2359197	4	1	weeds	none	n/a	n/a	TS	BK
5/2/2005	Oahu	Honolulu	HIA - United Cgo	Pallets	613127	2359195	4	2	weeds	Monomorium floricola 25	NO	NO	TS	BK
5/2/2005	Oahu	Honolulu	HIA - United Cgo	Next to Pallets	613122	2359199	4	3	n/a	none	n/a	n/a	TS	BK
5/2/2005	Oahu	Honolulu	HIA - United Cgo	Pallets	613121	2359202	4	4	weeds	Paratrechina longipes 20	NO	NO	TS	BK
5/2/2005	Oahu	Honolulu	HIA - United Cgo	By the Pallets	613124	2359205	4	5	n/a	Tapinoma melanocephalum 20	NO	NO	TS	BK
5/2/2005	Oahu	Honolulu	HIA - United Cgo	Next to Warehouse	613131	2359211	4	6	n/a	Ochetellus glaber 25	NO	NO	TS	BK
5/2/2005	Oahu	Honolulu	HIA - United Cgo	Cargo	613128	2359217	4	7	n/a	none	n/a	n/a	TS	BK
5/2/2005	Oahu	Honolulu	HIA - United Cgo	Next to Cargo	613131	2359226	4	8	n/a	Lepisiota sp. 15	NO	NO	TS	BK
5/2/2005	Oahu	Honolulu	HIA - United Cgo	Cargo Container	613123	2359233	4	9	n/a	none	n/a	n/a	TS	BK
5/2/2005	Oahu	Honolulu	HIA - United Cgo	Warehouse	613101	2359226	4	10	n/a	none	n/a	n/a	TS	BK
APHIS,PPQ,USDA FRUIT FLY FACILITY (WAIMANALO)														
5/10/2005	Oahu	Waimanalo	USDA Fruit Fly F.	Landscape Area	633403	2360069	4	1	n/a	Solenopsis geminata 10	NO	NO	TS	BK
5/10/2005	Oahu	Waimanalo	USDA Fruit Fly F.	Landscape Area	633403	2360069	4	2	n/a	Solenopsis geminata 10	NO	NO	TS	BK
5/10/2005	Oahu	Waimanalo	USDA Fruit Fly F.	Rest Area	633421	2360068	4	3	grass	Solenopsis geminata 20	NO	NO	TS	BK
5/10/2005	Oahu	Waimanalo	USDA Fruit Fly F.	Parking Area	633416	2360057	4	4	n/a	Solenopsis geminata 5	NO	NO	TS	BK
5/10/2005	Oahu	Waimanalo	USDA Fruit Fly F.	Storage Container	633326	2360059	4	5	n/a	Monomorium liliuokalanii 200	NO	NO	TS	BK
5/10/2005	Oahu	Waimanalo	USDA Fruit Fly F.	Storage Container	633308	2360061	4	6	n/a	Monomorium floricola 200	NO	NO	TS	BK
5/10/2005	Oahu	Waimanalo	USDA Fruit Fly F.	Cargo Container	633287	2360070	4	7	weeds	Monomorium floricola 100	NO	NO	TS	BK
5/10/2005	Oahu	Waimanalo	USDA Fruit Fly F.	Parking	633292	2360100	4	8	n/a	Ochetellus glaber 1	NO	NO	TS	BK
5/10/2005	Oahu	Waimanalo	USDA Fruit Fly F.	Cargo Container	633272	2360071	4	9	weeds	Solenopsis geminata 100	NO	NO	TS	BK
5/10/2005	Oahu	Waimanalo	USDA Fruit Fly F.	Entrance Gate	633269	2360084	4	10	grass	Monomorium floricola 80	NO	NO	TS	BK
IOLANI PALACE (NEXT TO STATE LIBRARY)														
6/22/2005	Oahu	Honolulu	Iolani Palace	Court Yard Area	618401	2356415	4	1	Hilo grass	Solenopsis geminata 100	NO	NO	TS	MC
6/22/2005	Oahu	Honolulu	Iolani Palace	Court Yard Area	618401	2356415	4	2	Hilo grass	Solenopsis geminata 100	NO	NO	TS	MC
6/22/2005	Oahu	Honolulu	Iolani Palace	Court Yard Area	618403	2356423	4	3	Hilo grass	Monomorium liliuokalanii 3	NO	NO	TS	MC

6/22/2005	Oahu	Honolulu	Iolani Palace	Court Yard Area	618403	2356423	4	3	Hilo grass	Solenopsis geminata 12	NO	NO	TS	MC
6/22/2005	Oahu	Honolulu	Iolani Palace	Court Yard Area	618408	2356434	4	4	Hilo grass	Monomorium liliuokalanii 35	NO	NO	TS	MC
6/22/2005	Oahu	Honolulu	Iolani Palace	Court Yard Area	618400	2356436	4	5	Hilo grass	Monomorium liliuokalanii 200	NO	NO	TS	MC
6/22/2005	Oahu	Honolulu	Iolani Palace	Court Yard Area	618400	2356436	4	6	Hilo grass	Solenopsis geminata 80	NO	NO	TS	MC
6/22/2005	Oahu	Honolulu	Iolani Palace	Court Yard Area	618400	2356436	4	6	Hilo grass	Monomorium liliuokalanii 1	NO	NO	TS	MC
6/22/2005	Oahu	Honolulu	Iolani Palace	Court Yard Area	618397	2356434	4	7	weeds	Cardiocondyla wroughtoni 1	NO	NO	TS	MC
6/22/2005	Oahu	Honolulu	Iolani Palace	Court Yard Area	618397	2356434	4	7	weeds	Technomyrmex albipes 4	NO	NO	TS	MC
6/22/2005	Oahu	Honolulu	Iolani Palace	Court Yard Area	618397	2356434	4	7	weeds	Monomorium liliuokalanii 7	NO	NO	TS	MC
6/22/2005	Oahu	Honolulu	Iolani Palace	Court Yard Area	618390	2356429	4	8	Hilo grass	Solenopsis geminata 50	NO	NO	TS	MC
6/22/2005	Oahu	Honolulu	Iolani Palace	Court Yard Area	618390	2356429	4	8	Hilo grass	Paratrechina longicornis 1	NO	NO	TS	MC
6/22/2005	Oahu	Honolulu	Iolani Palace	Court Yard Area	618396	2356423	4	9	Hilo grass	Monomorium liliuokalanii 60	NO	NO	TS	MC
6/22/2005	Oahu	Honolulu	Iolani Palace	Court Yard Area	618400	2356418	4	10	ti leaf	Solenopsis geminata 2	NO	NO	TS	MC
HONOLULU INTERNATIONAL AIRPORT (GATES)														
6/23/2005	Oahu	Honolulu	HIA	back side, baggage area	612370	2359028	4	1	ti leaf	Pheidole megacephala 30	NO	NO	TS	MC
6/23/2005	Oahu	Honolulu	HIA	sgate access rd	612361	2359031	4	2	palm tree	Pheidole megacephala 12	NO	NO	TS	MC
6/23/2005	Oahu	Honolulu	HIA	secured road	612373	2359017	4	3	dirt	Pheidole megacephala 40	NO	NO	TS	MC
6/23/2005	Oahu	Honolulu	HIA	baggage area, landscape	612383	2359012	4	4	ti leaf	Pheidole megacephala 20	NO	NO	TS	MC
6/23/2005	Oahu	Honolulu	HIA	baggage area, landscape	612383	2359012	4	4	ti leaf	Paratrechina longicornis 1	NO	NO	TS	MC
6/23/2005	Oahu	Honolulu	HIA	baggage area, by road	612383	2359012	4	5	palm tree	Pheidole megacephala 40	NO	NO	TS	MC
6/23/2005	Oahu	Honolulu	HIA	secured road, near gates	612405	2359010	4	6	palm tree	Pheidole megacephala 30	NO	NO	TS	MC
6/23/2005	Oahu	Honolulu	HIA	storage area, nr building	612406	2359010	4	7	grass	Pheidole megacephala 7	NO	NO	TS	MC
6/23/2005	Oahu	Honolulu	HIA	storage area, nr building	612406	2359010	4	7	grass	Paratrechina bourbonica 4	NO	NO	TS	MC
6/23/2005	Oahu	Honolulu	HIA	baggage area, n pole	612410	2359010	4	8	dirt	Pheidole megacephala 30	NO	NO	TS	MC
6/23/2005	Oahu	Honolulu	HIA	secured rd nr building	612431	2359011	4	9	n/a	Monomorium destructor 60	NO	NO	TS	MC
6/23/2005	Oahu	Honolulu	HIA	landscape	612445	2358986	4	10	n/a	Paratrechina longicornis 30	NO	NO	TS	MC
U.S. POSTAL SERVICE AT HONOLULU AIRPORT														
6/28/2005	Oahu	Honolulu	HIA, Post Off.	Side Walk	611703	2359839	4	1	shower tree	Solenopsis sp. 250	NO	NO	TS	MC
6/28/2005	Oahu	Honolulu	HIA, Post Off.	Next to Fence	611709	2359830	4	2	weeds	Solenopsis geminata 25	NO	NO	TS	MC
6/28/2005	Oahu	Honolulu	HIA, Post Off.	Next to Fence	611713	2359842	4	3	grass	none	n/a	n/a	TS	MC
6/28/2005	Oahu	Honolulu	HIA, Post Off.	Next to Cargo	611714	2359849	4	4	n/a	none	n/a	n/a	TS	MC
6/28/2005	Oahu	Honolulu	HIA, Post Off.	Next to Cargo	611717	2359860	4	5	n/a	none	n/a	n/a	TS	MC
6/28/2005	Oahu	Honolulu	HIA, Post Off.	Next to Fence	611718	2359868	4	6	grass	none	n/a	n/a	TS	MC
6/28/2005	Oahu	Honolulu	HIA, Post Off.	Next to Storage	611718	2359892	4	7	n/a	none	n/a	n/a	TS	MC
6/28/2005	Oahu	Honolulu	HIA, Post Off.	Landscape Area	611719	2359915	4	8	shower tree	none	n/a	n/a	TS	MC
6/28/2005	Oahu	Honolulu	HIA, Post Off.	Landscape	611714	2359895	4	9	shower tree	none	n/a	n/a	TS	MC
6/28/2005	Oahu	Honolulu	HIA, Post Off.	Landscape Area	611710	2359872	4	10	shower tree	none	n/a	n/a	TS	MC
MILILANI AGRICULTURE PARK														
6/29/2005	Oahu	Mililani	Ag Park	Main Entrance Road	601231	2370212	4	1	monkeypod	Tetramorium simillimum 2	NO	NO	TS	MC
6/29/2005	Oahu	Mililani	Ag Park	Main Entrance Road	601231	2370212	4	1	monkeypod	Monomorium liliuokalanii 5	NO	NO	TS	MC
6/29/2005	Oahu	Mililani	Ag Park	Main Entrance Road	601231	2370212	4	1	monkeypod	Tapinoma melanocephalum 5	NO	NO	TS	MC
6/29/2005	Oahu	Mililani	Ag Park	entrance, nr tree	601245	2370192	4	2	golden shower	Tetramorium simillimum 20	NO	NO	TS	MC
6/29/2005	Oahu	Mililani	Ag Park	entrance, nr tree	601251	2370178	4	3	monkeypod	Tapinoma melanocephalum 80	NO	NO	TS	MC
6/29/2005	Oahu	Mililani	Ag Park	entrance, nr tree	601219	2370185	4	4	monkeypod	Pheipole megacephala 200	NO	NO	TS	MC
6/29/2005	Oahu	Mililani	Ag Park	entrance	601256	2370149	4	5	n/a	Tetramorium simillimum 12	NO	NO	TS	MC
6/29/2005	Oahu	Mililani	Ag Park	entrance, nr wash area	601240	2370120	4	6	n/a	none	n/a	n/a	TS	MC
6/29/2005	Oahu	Mililani	Ag Park	entrance	601264	2370146	4	7	n/a	Tetramorium simillimum 1	NO	NO	TS	MC
6/29/2005	Oahu	Mililani	Ag Park	nr. nursery	601477	2369780	4	8	grass	none	n/a	n/a	TS	MC
6/29/2005	Oahu	Mililani	Ag Park	nr. nursery	601473	2369762	4	9	grass	Ochetellus glaber 4	NO	NO	TS	MC
6/29/2005	Oahu	Mililani	Ag Park	nr. nursery	601463	2369779	4	10	weeds	none	n/a	n/a	TS	MC
PEARL HARBOR NAVAL BASE (NAVY EXCHANGE WAREHOUSE)														
6/30/2005	Oahu	Pearl Harbor	Navy Exchange	nr fence	611009	2360320	4	1	weed	Monomorium pharaonis 100	NO	NO	TS	MC
6/30/2005	Oahu	Pearl Harbor	Navy Exchange	nr fence	611009	2360320	4	1	weed	Paratrechina longicoenis 1	NO	NO	TS	MC

6/30/2005	Oahu	Pearl Harbor	Navy Exchange	warehouse, landscape	611003	2360314	4	2	grass	Solenopsis geminata 3	NO	NO	TS	MC
6/30/2005	Oahu	Pearl Harbor	Navy Exchange	warehouse, nr cargo	610957	2360324	4	3	n/a	Monomorium pharaonis 50	NO	NO	TS	MC
6/30/2005	Oahu	Pearl Harbor	Navy Exchange	warehouse, nr container	610946	2360344	4	4	n/a	Solenopsis geminata 150	NO	NO	TS	MC
6/30/2005	Oahu	Pearl Harbor	Navy Exchange	warehouse, landscape	610939	2360349	4	5	grass	Solenopsis geminata 80	NO	NO	TS	MC
6/30/2005	Oahu	Pearl Harbor	Navy Exchange	warehouse, nr fence	610935	2360362	4	6	weed	Solenopsis geminata 50	NO	NO	TS	MC
6/30/2005	Oahu	Pearl Harbor	Navy Exchange	warehouse, landscape	610929	2360368	4	7	grass	Solenopsis geminata 40	NO	NO	TS	MC
6/30/2005	Oahu	Pearl Harbor	Navy Exchange	warehouse, nr cargo	610917	2360384	4	8	n/a	Solenopsis geminata 100	NO	NO	TS	MC
6/30/2005	Oahu	Pearl Harbor	Navy Exchange	warehouse, nr container	610906	2360396	4	9	n/a	Solenopsis geminata 50	NO	NO	TS	MC
6/30/2005	Oahu	Pearl Harbor	Navy Exchange	warehouse	610919	2360399	4	10	n/a	Monomorium pharaonis 5	NO	NO	TS	MC
SAND ISLAND ACCESS ROAD (KAPALAMA WAREHOUSE)														
7/1/2005	Oahu	Honolulu	Sand Island	Kapalama warehouse	615181	2357704	4	1	n/a	Monomorium pharaonis 200	NO	NO	TS	MC
7/1/2005	Oahu	Honolulu	Sand Island	Kapalama warehouse	615186	2357696	4	2	n/a	Monomorium pharaonis 100	NO	NO	TS	MC
7/1/2005	Oahu	Honolulu	Sand Island	Kapalama warehouse	615189	2357688	4	3	n/a	none	n/a	n/a	TS	MC
7/1/2005	Oahu	Honolulu	Sand Island	Kapalama warehouse	615175	2357715	4	4	n/a	Monomorium pharaonis 80	NO	NO	TS	MC
7/1/2005	Oahu	Honolulu	Sand Island	Kapalama warehouse	615176	2357718	4	5	n/a	Monomorium pharaonis 200	NO	NO	TS	MC
7/1/2005	Oahu	Honolulu	Sand Island	Kapalama warehouse	615175	2357722	4	6	n/a	Monomorium pharaonis 2	NO	NO	TS	MC
7/1/2005	Oahu	Honolulu	Sand Island	Kapalama warehouse	615163	2357738	4	7	n/a	Monomorium pharaonis 40	NO	NO	TS	MC
7/1/2005	Oahu	Honolulu	Sand Island	Kapalama warehouse	615157	2357746	4	8	n/a	none	n/a	n/a	TS	MC
7/1/2005	Oahu	Honolulu	Sand Island	Kapalama warehouse	615152	2357756	4	9	weed	none	n/a	n/a	TS	MC
7/1/2005	Oahu	Honolulu	Sand Island	Kapalama warehouse	615147	2357770	4	10	n/a	none	n/a	n/a	TS	MC
WAIMANALO DISTRICT (HAWAII SUNSHINE NURSERY)														
7/5/2005	Oahu	Waimanalo	Sunshine Nurs.	Hihimanu Street	633077	2360500	4	1	plumeria tree	Pheidole megacephala 50	NO	NO	TS/ RT	MC
7/5/2005	Oahu	Waimanalo	Sunshine Nurs.	by road	633069	2360499	4	2	plumeria tree	Pheidole megacephala 100	NO	NO	TS/ RT	MC
7/5/2005	Oahu	Waimanalo	Sunshine Nurs.	nr fence	633071	2360502	4	3	plumeria tree	Pheidole megacephala 100	NO	NO	TS/ RT	MC
7/5/2005	Oahu	Waimanalo	Sunshine Nurs.	nr front entrance gate	633057	2360508	4	4	n/a	Pheidole megacephala 200	NO	NO	TS/ RT	MC
7/5/2005	Oahu	Waimanalo	Sunshine Nurs.	by telephone pole	633051	2360508	4	5	grass	Monomorium liliuokalani 1	NO	NO	TS/ RT	MC
7/5/2005	Oahu	Waimanalo	Sunshine Nurs.	landscape	633037	2360512	4	6	grass	Pheidole megacephala 250	NO	NO	TS/ RT	MC
7/5/2005	Oahu	Waimanalo	Sunshine Nurs.	by telephone pole	633017	2360520	4	7	grass	Monomorium liliuokalani 25	NO	NO	TS/ RT	MC
7/5/2005	Oahu	Waimanalo	Sunshine Nurs.	by telephone pole	633017	2360520	4	7	grass	Ochetellus glaber 7	NO	NO	TS/ RT	MC
7/5/2005	Oahu	Waimanalo	Sunshine Nurs.	by road	633010	2360524	4	8	n/a	Monomorium liliuokalani 3	NO	NO	TS/ RT	MC
7/5/2005	Oahu	Waimanalo	Sunshine Nurs.	landscape	632998	2360527	4	9	bougainvillea	Monomorium liliuokalani 25	NO	NO	TS/ RT	MC
7/5/2005	Oahu	Waimanalo	Sunshine Nurs.	landscape	632998	2360527	4	9	bougainvillea	Ochetellus glaber 1	NO	NO	TS/ RT	MC
7/5/2005	Oahu	Waimanalo	Sunshine Nurs.	landscape	632998	2360527	4	9	bougainvillea	Peddle megacephala 1	NO	NO	TS/ RT	MC
7/5/2005	Oahu	Waimanalo	Sunshine Nurs.	landscape	632994	2360528	4	10	bougainvillea	Monomorium liliuokalani 10	NO	NO	TS/ RT	MC
7/5/2005	Oahu	Waimanalo	Sunshine Nurs.	landscape	632994	2360528	4	10	bougainvillea	Anoplolepis gracilipes 8	NO	NO	TS/ RT	MC
SAND ISLAND ACCESS ROAD (MATSON SHIPPING CO.)														
7/6/2005	Oahu	Honolulu	Sand Island	Matson, Pier-51, medial strip	615510	2356904	4	1	grass	Monomorium pharaonis 200	NO	NO	TS/ RT	MC
7/6/2005	Oahu	Honolulu	Sand Island	Matson, Pier-51, medial strip	615515	2356893	4	2	grass	Monomorium pharaonis 100	NO	NO	TS/ RT	MC
7/6/2005	Oahu	Honolulu	Sand Island	Matson, Pier-51, medial strip	615506	2356918	4	3	grass	Solenopsis geminata 100	NO	NO	TS/ RT	MC
7/6/2005	Oahu	Honolulu	Sand Island	Matson, Pier-51, by pole	615498	2356943	4	4	grass	Solenopsis geminata 80	NO	NO	TS/ RT	MC
7/6/2005	Oahu	Honolulu	Sand Island	Matson, Pier-51, medial strip	615489	2356963	4	5	grass	Monomorium pharaonis 70	NO	NO	TS/ RT	MC
7/6/2005	Oahu	Honolulu	Sand Island	Matson, Pier-51, medial strip	615489	2356963	4	5	grass	Solenopsis papuana 13	NO	NO	TS/ RT	MC
7/6/2005	Oahu	Honolulu	Sand Island	Matson, Pier-51, by pole	615483	2356983	4	6	n/a	Solenopsis geminata 60	NO	NO	TS/ RT	MC
7/6/2005	Oahu	Honolulu	Sand Island	Matson, Pier-51, med. strip	615481	2356986	4	7	grass	Monomorium pharaonis 150	NO	NO	TS/ RT	MC
7/6/2005	Oahu	Honolulu	Sand Island	Matson, Pier-51, by pole	615471	2357024	4	8	n/a	Solenopsis geminata 50	NO	NO	TS/ RT	MC
7/6/2005	Oahu	Honolulu	Sand Island	Matson, Pier-51, med. strip	615464	2357042	4	9	grass	Solenopsis geminata 100	NO	NO	TS/ RT	MC
7/6/2005	Oahu	Honolulu	Sand Island	Matson, Pier-51, med. strip	615466	2357047	4	10	grass	Solenopsis geminata 1	NO	NO	TS/ RT	MC
KOOLINA RESORT WEST SIDE OF ISLAND (LAGOON BEACH PARK 4)														
7/8/2005	Oahu	Koolina	Lagoon 4	landscape	591076	2358803	4	1	grass	Pheidole megacephala 200	NO	NO	TS	MC
7/8/2005	Oahu	Koolina	Lagoon 4	right side of walkway	591051	2358810	4	2	coconut tree	Solenopsis geminata 30	NO	NO	TS	MC
7/8/2005	Oahu	Koolina	Lagoon 4	right side of walkway	591050	2358813	4	3	coconut tree	Solenopsis geminata 25	NO	NO	TS	MC
7/8/2005	Oahu	Koolina	Lagoon 4	right side of beach	591032	2358822	4	4	coconut tree	Pheidole megacephala 3	NO	NO	TS	MC

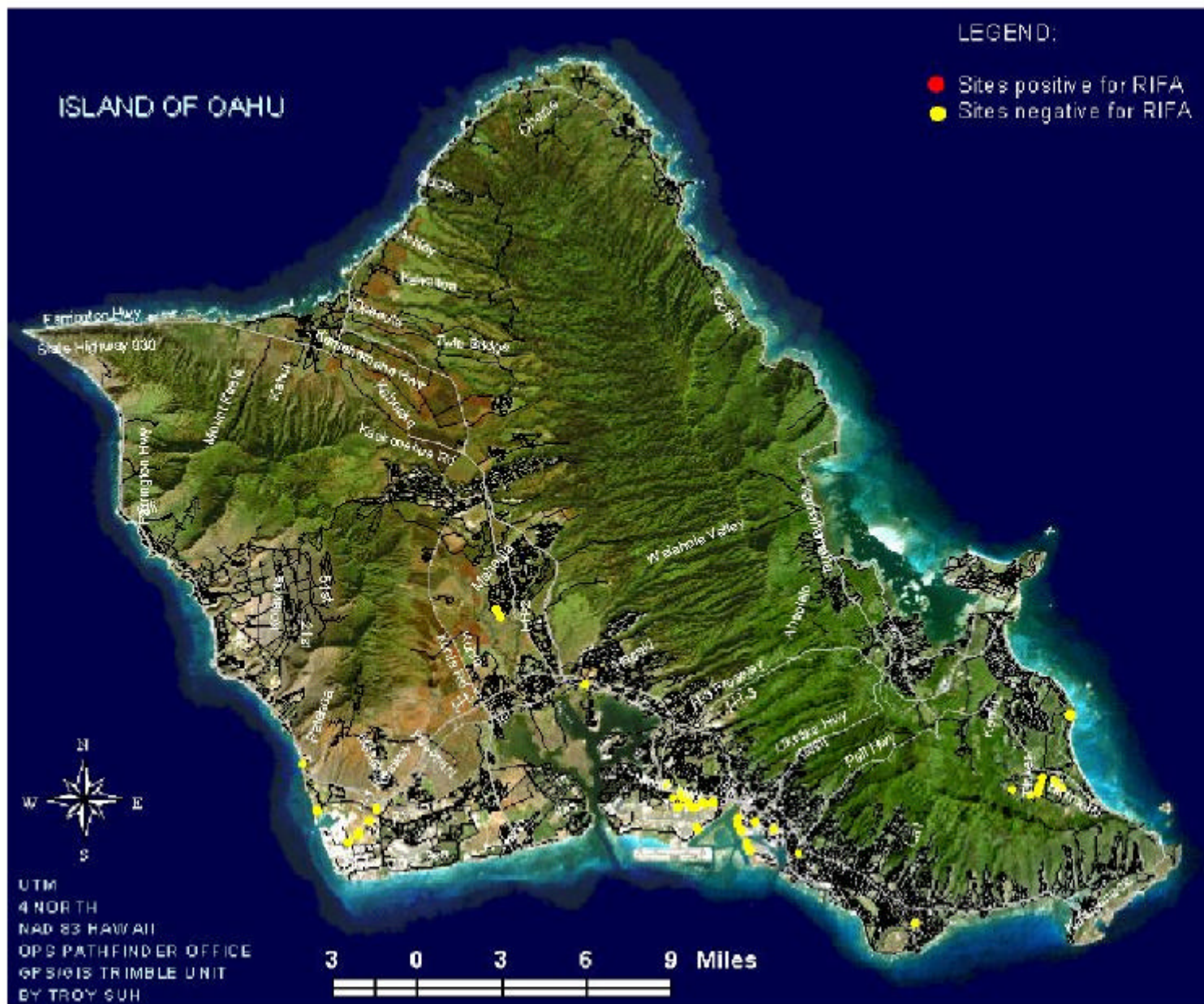
7/8/2005	Oahu	Koolina	Lagoon 4	right side of beach	591009	2358833	4	5	coconut tree	Solenopsis geminata 20	NO	NO	TS	MC
7/8/2005	Oahu	Koolina	Lagoon 4	right side of walkway	590989	2358863	4	6	grass	Solenopsis geminata 60	NO	NO	TS	MC
7/8/2005	Oahu	Koolina	Lagoon 4	right side of walkway	590987	2358862	4	7	coconut tree	Solenopsis geminata 30	NO	NO	TS	MC
7/8/2005	Oahu	Koolina	Lagoon 4	right side of walkway	590988	2358867	4	8	grass	Solenopsis geminata 50	NO	NO	TS	MC
7/8/2005	Oahu	Koolina	Lagoon 4	right side of walkway	590989	2358865	4	9	grass	Solenopsis geminata 60	NO	NO	TS	MC
7/8/2005	Oahu	Koolina	Lagoon 4	right side of walkway	590992	2358859	4	10	grass	Solenopsis geminata 60	NO	NO	TS	MC
SAND ISLAND ACCESS ROAD (MATSON SHIPPING CO. PIER-51 B)														
7/26/2005	Oahu	Honolulu	Sand Island	Pier 51 B, medial strip	615642	2356664	4	1	n/a	Monomorium destructor 200	NO	NO	TS/RT	MC
7/26/2005	Oahu	Honolulu	Sand Island	Pier 51 B, medial strip	615657	2356658	4	2	n/a	Monomorium destructor 250	NO	NO	TS/RT	MC
7/26/2005	Oahu	Honolulu	Sand Island	Pier 51 B, medial strip, sign	615659	2356659	4	3	n/a	Monomorium pharaonis 50	NO	NO	TS/RT	MC
7/26/2005	Oahu	Honolulu	Sand Island	Pier 51 B, medial strip, tree	615710	2356649	4	4	yellow shower	Solenopsis geminata 200	NO	NO	TS/RT	MC
7/26/2005	Oahu	Honolulu	Sand Island	Pier 51 B, medial strip, pole	615736	2356648	4	5	n/a	Solenopsis geminata 20	NO	NO	TS/RT	MC
7/26/2005	Oahu	Honolulu	Sand Island	Pier 51 B, medial strip, pole	615736	2356648	4	5	n/a	Monomorium pharaonis 80	NO	NO	TS/RT	MC
7/26/2005	Oahu	Honolulu	Sand Island	Pier 51 B, Medial Strip	615761	2356653	4	6	n/a	none	n/a	n/a	TS/RT	MC
7/26/2005	Oahu	Honolulu	Sand Island	Pier 51 B, Medial Strip	615630	2356674	4	7	dead grass	Monomorium destructor 300	NO	NO	TS/RT	MC
7/26/2005	Oahu	Honolulu	Sand Island	Pier 51 B, Medial Strip	615622	2356680	4	8	n/a	none	NO	NO	TS/RT	MC
7/26/2005	Oahu	Honolulu	Sand Island	Pier 51 B, Medial Strip	615590	2356686	4	9	dead grass	Ochetellus glaber 50	NO	NO	TS/RT	MC
7/26/2005	Oahu	Honolulu	Sand Island	Pier 51 B, Medial Strip, sign	615598	2356702	4	10	n/a	Monomorium destructor 70	NO	NO	TS/RT	MC
SAND ISLAND ACCESS ROAD (TOYOTA AUTOMOBILE LOT)														
8/2/2005	Oahu	Honolulu	Sand Island	Toyota lot, main road	615014	2358035	4	1	n/a	Solenopsis geminata 100	NO	NO	TS	MC
8/2/2005	Oahu	Honolulu	Sand Island	Toyota lot, nr pole	615010	2358046	4	2	n/a	Solenopsis geminata 50	NO	NO	TS	MC
8/2/2005	Oahu	Honolulu	Sand Island	Toyota lot, side strip	614987	2358065	4	3	grass	Solenopsis geminata 20	NO	NO	TS	MC
8/2/2005	Oahu	Honolulu	Sand Island	Toyota lot, side strip	614995	2358067	4	4	grass	Solenopsis geminata 1	NO	NO	TS	MC
8/2/2005	Oahu	Honolulu	Sand Island	Toyota lot, nr fence	614995	2358070	4	5	weeds	Solenopsis geminata 10	NO	NO	TS	MC
8/2/2005	Oahu	Honolulu	Sand Island	Toyota lot, nr road	614989	2358084	4	6	dead grass	none	n/a	n/a	TS	MC
8/2/2005	Oahu	Honolulu	Sand Island	Toyota lot, nr car	614979	2358102	4	7	n/a	Ochetellus glaber 80	NO	NO	TS	MC
8/2/2005	Oahu	Honolulu	Sand Island	Toyota lot, nr fence	614975	2358119	4	8	weeds	none	n/a	n/a	TS	MC
8/2/2005	Oahu	Honolulu	Sand Island	Toyota lot, main road	614993	2358074	4	9	n/a	Solenopsis geminata 10	NO	NO	TS	MC
8/2/2005	Oahu	Honolulu	Sand Island	Toyota lot, nr fence	615015	2358031	4	10		Solenopsis geminata 20	NO	NO	TS	MC
SAND ISLAND ACCESS ROAD (HORIZON SHIPPING CO.)														
8/3/2005	Oahu	Honolulu	Sand Island	Horizon, nr fence	615655	2356675	4	1	n/a	Monomorium pharaonis 200	NO	NO	TS	MC
8/3/2005	Oahu	Honolulu	Sand Island	Horizon, side strip area	615637	2356685	4	2	grass	none	n/a	n/a	TS	MC
8/3/2005	Oahu	Honolulu	Sand Island	Horizon, nr fence	615630	2356690	4	3	n/a	Monomorium pharaonis 150	NO	NO	TS	MC
8/3/2005	Oahu	Honolulu	Sand Island	Horizon, nr road	615625	2356696	4	4	n/a	Monomorium pharaonis 100	NO	NO	TS	MC
8/3/2005	Oahu	Honolulu	Sand Island	Horizon, side strip area	615618	2356702	4	5	grass	Monomorium pharaonis 150	NO	NO	TS	MC
8/3/2005	Oahu	Honolulu	Sand Island	Horizon, by sign pole	615609	2356709	4	6	grass	Tetramorium simillimum 100	NO	NO	TS	MC
8/3/2005	Oahu	Honolulu	Sand Island	Horizon, nr fence	615603	2356721	4	7	n/a	Monomorium pharaonis 100	NO	NO	TS	MC
8/3/2005	Oahu	Honolulu	Sand Island	Horizon, by light pole	615589	2356735	4	8	grass	Monomorium pharaonis 100	NO	NO	TS	MC
8/3/2005	Oahu	Honolulu	Sand Island	Horizon, nr fence	615586	2356750	4	9	n/a	Monomorium pharaonis 150	NO	NO	TS	MC
8/3/2005	Oahu	Honolulu	Sand Island	Horizon, nr car	615585	2356758	4	10	n/a	Monomorium pharaonis 200	NO	NO	TS	MC
CAMPBELL INDUSTRIAL PARK (KALAELOA BLVD)														
8/16/2005	Oahu	Campbell	Kalaeloa Blvd	Main Street	593376	2357481	4	1	monkeypod	Tetramorium simillimum 30	NO	NO	TS	MC
8/16/2005	Oahu	Campbell	Kalaeloa Blvd	Medial Strip	593370	2357454	4	2	monkeypod	Tetramorium simillimum 50	NO	NO	TS	MC
8/16/2005	Oahu	Campbell	Kalaeloa Blvd	Medial Strip	593369	2357431	4	3	grass	Tetramorium simillimum 2	NO	NO	TS	MC
8/16/2005	Oahu	Campbell	Kalaeloa Blvd	Medial Strip	593379	2357509	4	4	grass	Solenopsis geminata 10	NO	NO	TS	MC
8/16/2005	Oahu	Campbell	Kalaeloa Blvd	Medial Strip	593379	2357509	4	4	grass	Tetramorium simillimum 3	NO	NO	TS	MC
8/16/2005	Oahu	Campbell	Kalaeloa Blvd	Medial Strip	593379	2357509	4	4	grass	Technomyrmex albipes 1	NO	NO	TS	MC
8/16/2005	Oahu	Campbell	Kalaeloa Blvd	Medial Strip	593387	2357535	4	5	grass	Solenopsis geminata 10	NO	NO	TS	MC
8/16/2005	Oahu	Campbell	Kalaeloa Blvd	Medial Strip	593387	2357535	4	5	grass	Ochetellus glaber 1	NO	NO	TS	MC
8/16/2005	Oahu	Campbell	Kalaeloa Blvd	Main Street	593397	2357536	4	6	golden shower	Solenopsis geminata 4	NO	NO	TS	MC
8/16/2005	Oahu	Campbell	Kalaeloa Blvd	Main Street	593397	2357536	4	6	golden shower	Tetramorium simillimum 3	NO	NO	TS	MC
8/16/2005	Oahu	Campbell	Kalaeloa Blvd	Medial Strip	593405	2357590	4	7	grass	Tetramorium simillimum 10	NO	NO	TS	MC

8/16/2005	Oahu	Campbell	Kalaeloa Blvd	By the Pole	593364	2357506	4	8	grass	Tetramorium simillimum 3	NO	NO	TS	MC
8/16/2005	Oahu	Campbell	Kalaeloa Blvd	Landscape Area	593345	2357480	4	9	grass	Solenopsis geminata 60	NO	NO	TS	MC
8/16/2005	Oahu	Campbell	Kalaeloa Blvd	Landscape Area	593343	2357461	4	10	grass	Monomorium liliuokalanii 50	NO	NO	TS	MC
CAMPBELL INDUSTRIAL PARK (MILO NURSERY)														
8/30/2005	Oahu	Campbell	Milo Nursery	Malakole Street	592842	2357108	4	1	shower tree	Anoplolepis gracilipes 8	NO	NO	TS/RT	MC
8/30/2005	Oahu	Campbell	Milo Nursery	Malakole Street	592842	2357108	4	1	shower tree	Monomorium liliuokalanii 4	NO	NO	TS/RT	MC
8/30/2005	Oahu	Campbell	Milo Nursery	Malakole Street	592842	2357108	4	1	shower tree	Plagirolepis alluaudi 1	NO	NO	TS/RT	MC
8/30/2005	Oahu	Campbell	Milo Nursery	Malakole Street	592832	2357109	4	2	oleander	Anoplolepis gracilipes 1	NO	NO	TS/RT	MC
8/30/2005	Oahu	Campbell	Milo Nursery	Malakole Street	592832	2357109	4	2	oleander	Monomorium liliuokalanii 60	NO	NO	TS/RT	MC
8/30/2005	Oahu	Campbell	Milo Nursery	Malakole Street	592823	2357108	4	3	grass	Anoplolepis gracilipes 7	NO	NO	TS/RT	MC
8/30/2005	Oahu	Campbell	Milo Nursery	Malakole Street	592806	2357102	4	4	oleander	Monomorium liliuokalanii 60	NO	NO	TS/RT	MC
8/30/2005	Oahu	Campbell	Milo Nursery	Malakole Street	592800	2357109	4	5	grass	Solenopsis geminata 1	NO	NO	TS/RT	MC
8/30/2005	Oahu	Campbell	Milo Nursery	Malakole Street	592791	2357109	4	6	oleander	Tetramorium simillimum 1	NO	NO	TS/RT	MC
8/30/2005	Oahu	Campbell	Milo Nursery	Malakole Street	592791	2357109	4	6	oleander	Paratrechina longicoenis 1	NO	NO	TS/RT	MC
8/30/2005	Oahu	Campbell	Milo Nursery	Malakole Street	592779	2357107	4	7	grass	Tetramorium simillimum 1	NO	NO	TS/RT	MC
8/30/2005	Oahu	Campbell	Milo Nursery	Malakole Street	592779	2357107	4	7	grass	Ochetellus glaber 2	NO	NO	TS/RT	MC
8/30/2005	Oahu	Campbell	Milo Nursery	by electric pole	592770	2357096	4	8	n/a	Monomorium liliuokalanii 15	NO	NO	TS/RT	MC
8/30/2005	Oahu	Campbell	Milo Nursery	by electric pole	592814	2357098	4	9	grass	Paratrechina longicoenis 100	NO	NO	TS/RT	MC
8/30/2005	Oahu	Campbell	Milo Nursery	by electric pole	592824	2357099	4	10	n/a	Paratrechina longicoenis 60	NO	NO	TS/RT	MC
CAMPBELL INDUSTRIAL PARK (KALAELOA BLVD)														
8/31/2005	Oahu	Campbell	Kalaeloa Blvd	Medial Strip	594016	2358239	4	1	shower tree	Tetramorium simillimum 80	NO	NO	TS/RT	MC
8/31/2005	Oahu	Campbell	Kalaeloa Blvd	Medial Strip	594016	2358239	4	1	shower tree	Cardiocondyla emeryi 3	NO	NO	TS/RT	MC
8/31/2005	Oahu	Campbell	Kalaeloa Blvd	By the Tree	594003	2358284	4	2	shower tree	Technomyrmex albipes 40	NO	NO	TS/RT	MC
8/31/2005	Oahu	Campbell	Kalaeloa Blvd	Medial Strip	593986	2358265	4	3	shower tree	Solenopsis germinata 20	NO	NO	TS/RT	MC
8/31/2005	Oahu	Campbell	Kalaeloa Blvd	Off Ramp of Freeway	593966	2358245	4	4	grass	Technomyrmex albipes 15	NO	NO	TS/RT	MC
8/31/2005	Oahu	Campbell	Kalaeloa Blvd	Off Ramp of Freeway	593966	2358245	4	4	grass	Tetramorium simillimum 3	NO	NO	TS/RT	MC
8/31/2005	Oahu	Campbell	Kalaeloa Blvd	side strip by spinkler box	593959	2358263	4	5	grass	Tetramorium simillimum 150	NO	NO	TS/RT	MC
8/31/2005	Oahu	Campbell	Kalaeloa Blvd	freeway offramp	593946	2358225	4	6	shower tree	Tetramorium simillimum 40	NO	NO	TS/RT	MC
8/31/2005	Oahu	Campbell	Kalaeloa Blvd	freeway offramp	593936	2358219	4	7	grass	Solenopsis germinata 80	NO	NO	TS/RT	MC
8/31/2005	Oahu	Campbell	Kalaeloa Blvd	side strip	593941	2358243	4	8	n/a	Monomorium pharaonis 150	NO	NO	TS/RT	MC
8/31/2005	Oahu	Campbell	Kalaeloa Blvd	side strip, by electric pole	593973	2358272	4	9	n/a	Monomorium pharaonis 60	NO	NO	TS/RT	MC
8/31/2005	Oahu	Campbell	Kalaeloa Blvd	by road sign	593992	2358289	4	10	n/a	Monomorium pharaonis 150	NO	NO	TS/RT	MC
HONOLULU INTERNATIONAL AIRPORT (AIRPORT TERMINALS) BY ACCESS " C "														
9/1/2005	Oahu	Honolulu	HIA	Music Rd, terminal gate	611613	2359132	4	1	plumeria tree	Solenopsis germinata 30	NO	NO	TS/RT	MC
9/1/2005	Oahu	Honolulu	HIA	Music Rd, landscape	611611	2359118	4	2	grass	Solenopsis germinata 40	NO	NO	TS/RT	MC
9/1/2005	Oahu	Honolulu	HIA	Music Rd, parking lot	611609	2359112	4	3	palm tree	Monomorium destructor 150	NO	NO	TS/RT	MC
9/1/2005	Oahu	Honolulu	HIA	Music Rd, side walk area	611602	2359092	4	4	n/a	Paratrechina longicoenis 3	NO	NO	TS/RT	MC
9/1/2005	Oahu	Honolulu	HIA	Music Rd, side walk area	611602	2359092	4	4	n/a	Cardiocondyla Nuda 1	NO	NO	TS/RT	MC
9/1/2005	Oahu	Honolulu	HIA	Music Rd, by light pole	611605	2359080	4	5	n/a	Pheidole megacephala 20	NO	NO	TS/RT	MC
9/1/2005	Oahu	Honolulu	HIA	Music Rd, by road sign	611603	2359060	4	6	n/a	Pheidole megacephala 40	NO	NO	TS/RT	MC
9/1/2005	Oahu	Honolulu	HIA	Music Rd, side walk area	611599	2359047	4	7	n/a	Pheidole megacephala 20	NO	NO	TS/RT	MC
9/1/2005	Oahu	Honolulu	HIA	Music Rd, landscape	611590	2359034	4	8	n/a	Pheidole megacephala 1	NO	NO	TS/RT	MC
9/1/2005	Oahu	Honolulu	HIA	Music Rd, Swissport area	611620	2359059	4	9	n/a	Monomorium destructor 200	NO	NO	TS/RT	MC
9/1/2005	Oahu	Honolulu	HIA	Music Rd, around building	611623	2359104	4	10	n/a	Monomorium destructor 100	NO	NO	TS/RT	MC
HONOLULU INTERNATIONAL AIRPORT (CARGO TERMINAL)														
9/7/2005	Oahu	Honolulu	HIA	Northwest Cargo, nr fence	612569	2359031	4	1	grass	Monomorium pharaonis 50	NO	NO	TS/RT	MC
9/7/2005	Oahu	Honolulu	HIA	Northwest Cargo, nr lot	612562	2359030	4	2	n/a	Monomorium pharaonis 50	NO	NO	TS/RT	MC
9/7/2005	Oahu	Honolulu	HIA	Northwest Cargo, nr lot	612562	2359030	4	2	n/a	Tapinoma melanocephalum 20	NO	NO	TS/RT	MC
9/7/2005	Oahu	Honolulu	HIA	Northwest Cargo, nr fence	612548	2359036	4	3	n/a	Monomorium pharaonis 100	NO	NO	TS/RT	MC
9/7/2005	Oahu	Honolulu	HIA	Northwest Cargo, nr road	612543	2359034	4	4	weeds	Tapinoma melanocephalum 80	NO	NO	TS/RT	MC
9/7/2005	Oahu	Honolulu	HIA	Northwest Cargo, nr w-house	612532	2359035	4	5	n/a	Monomorium pharaonis 200	NO	NO	TS/RT	MC
9/7/2005	Oahu	Honolulu	HIA	Northwest Cargo, nr road	612522	2359038	4	6	n/a	Paratrechina longicoenis 20	NO	NO	TS/RT	MC

9/7/2005	Oahu	Honolulu	HIA	Northwest Cargo, nr w-house	612507	2359035	4	7	n/a	none	n/a	n/a	TS/RT	MC
9/7/2005	Oahu	Honolulu	HIA	Northwest Cargo	612511	2359015	4	8	n/a	Solenopsis germinata 50	NO	NO	TS/RT	MC
9/7/2005	Oahu	Honolulu	HIA	Northwest Cargo, nr road	612501	2359014	4	9	palm tree	none	n/a	n/a	TS/RT	MC
9/7/2005	Oahu	Honolulu	HIA	Northwest Cargo	612521	2359016	4	10	n/a	Monomorium pharaonis 50	NO	NO	TS/RT	MC
KEEHI LAGOON DRIVE (NEAR HONOLULU AIRPORT)														
9/19/2005	Oahu	Honolulu	Keehi Lagoon	side strip area	613558	2359317	4	1	bouganvillia	Monomorium pharaonis 4	NO	NO	TS	MC
9/19/2005	Oahu	Honolulu	Keehi Lagoon	nr road	613543	2359320	4	2	dead grass	Monomorium destructor 200	NO	NO	TS	MC
9/19/2005	Oahu	Honolulu	Keehi Lagoon	by fence	613543	2359313	4	3	n/a	none	n/a	n/a	TS	MC
9/19/2005	Oahu	Honolulu	Keehi Lagoon	landscape	613581	2359312	4	4	grass	none	n/a	n/a	TS	MC
9/19/2005	Oahu	Honolulu	Keehi Lagoon	side strip area	613601	2359306	4	5	grass	Monomorium destructor 2	NO	NO	TS	MC
9/19/2005	Oahu	Honolulu	Keehi Lagoon	nr road	613634	2359318	4	6	plumeria tree	Monomorium destructor 100	NO	NO	TS	MC
9/19/2005	Oahu	Honolulu	Keehi Lagoon	by cement block	613638	2359316	4	7	n/a	Monomorium destructor 10	NO	NO	TS	MC
9/19/2005	Oahu	Honolulu	Keehi Lagoon	by cement block	613660	2359313	4	8	n/a	none	n/a	n/a	TS	MC
9/19/2005	Oahu	Honolulu	Keehi Lagoon	side strip area	613677	2359315	4	9	grass	Monomorium destructor 150	NO	NO	TS	MC
9/19/2005	Oahu	Honolulu	Keehi Lagoon	side strip area	613671	2359311	4	10	grass	none	n/a	n/a	TS	MC
DIAMOND HEAD DISTRICT (KILAUEA PARK)														
10/7/2005	Oahu	Honolulu	Diamond Head	Kilauea Park	625070	2352522	4	1	grass	Pheidole megacephala 40	NO	NO	TS	MC
10/7/2005	Oahu	Honolulu	Diamond Head	Kilauea Park	625068	2352515	4	2	grass	Pheidole megacephala 200	NO	NO	TS	MC
10/7/2005	Oahu	Honolulu	Diamond Head	Kilauea Park, nr. Lot	625070	2352517	4	3	monkeypod	Pheidole megacephala 125	NO	NO	TS	MC
10/7/2005	Oahu	Honolulu	Diamond Head	Kilauea Park, playground	625052	2352497	4	4	golden shower	Pheidole megacephala 100	NO	NO	TS	MC
10/7/2005	Oahu	Honolulu	Diamond Head	Kilauea Park, playground	625059	2352504	4	5	shower tree	Pheidole megacephala 50	NO	NO	TS	MC
10/7/2005	Oahu	Honolulu	Diamond Head	Kilauea Park, gym	625058	2352501	4	6	n/a	Pheidole megacephala 20	NO	NO	TS	MC
10/7/2005	Oahu	Honolulu	Diamond Head	Kilauea Park, gym	625056	2352498	4	7	n/a	Pheidole megacephala 4	NO	NO	TS	MC
10/7/2005	Oahu	Honolulu	Diamond Head	Kilauea Park, sidewalk	625072	2352519	4	8	grass	Pheidole megacephala 150	NO	NO	TS	MC
10/7/2005	Oahu	Honolulu	Diamond Head	Kilauea Park, playground	625057	2352501	4	9	grass	Pheidole megacephala 20	NO	NO	TS	MC
10/7/2005	Oahu	Honolulu	Diamond Head	Kilauea Park, gym	625038	2352475	4	10	n/a	a) Pheidole megacephala 5	NO	NO	TS	MC
10/7/2005	Oahu	Honolulu	Diamond Head	Kilauea Park, gym	625038	2352475	4	10	n/a	b) Monomorium liliuokalanii 12	NO	NO	TS	MC
SAND ISLAND ACCESS ROAD														
10/13/2005	Oahu	Honolulu	Sand Island	medial strip, nr entrance	615071	2358427	4	1	yellow shower	Ochetellus glaber 100	NO	NO	TS	MC
10/13/2005	Oahu	Honolulu	Sand Island	medial strip, nr entrance	615071	2358427	4	2	yellow shower	Monomorium pharaonis 150	NO	NO	TS	MC
10/13/2005	Oahu	Honolulu	Sand Island	medial strip, nr entrance	615071	2358427	4	3	yellow shower	Monomorium pharaonis 200	NO	NO	TS	MC
10/13/2005	Oahu	Honolulu	Sand Island	medial strip, nr entrance	615071	2358427	4	4	yellow shower	Ochetellus glaber 100	NO	NO	TS	MC
10/13/2005	Oahu	Honolulu	Sand Island	medial strip, nr entrance	615071	2358427	4	5	yellow shower	Monomorium pharaonis 130	NO	NO	TS	MC
10/13/2005	Oahu	Honolulu	Sand Island	medial strip, nr entrance	615071	2358427	4	6	yellow shower	Monomorium pharaonis 60	NO	NO	TS	MC
10/13/2005	Oahu	Honolulu	Sand Island	medial strip, nr entrance	615071	2358427	4	7	yellow shower	Monomorium pharaonis 30	NO	NO	TS	MC
10/13/2005	Oahu	Honolulu	Sand Island	medial strip, nr entrance	615071	2358427	4	8	yellow shower	Monomorium pharaonis 200	NO	NO	TS	MC
10/13/2005	Oahu	Honolulu	Sand Island	medial strip, nr entrance	615071	2358427	4	9	yellow shower	Monomorium pharaonis 250	NO	NO	TS	MC
10/13/2005	Oahu	Honolulu	Sand Island	medial strip, nr entrance	615071	2358427	4	10		Monomorium pharaonis 80	NO	NO	TS	MC
CAMPBELL INDUSTRIAL PARK (ENTRANCE OF MAIN ROAD)														
10/20/2005	Oahu	Campbell	Main Road	medial strip	594396	2358931	4	1	grass	Paratrechina longicoenis 1	NO	NO	TS/RT	MC
10/20/2005	Oahu	Campbell	Main Road	by tree	594394	2358924	4	2	shower tree	none	n/a	n/a	TS/RT	MC
10/20/2005	Oahu	Campbell	Main Road	medial strip	594401	2358944	4	3	grass	none	n/a	n/a	TS/RT	MC
10/20/2005	Oahu	Campbell	Main Road	medial strip	594398	2358949	4	4	n/a	Solenopsis germinata 50	NO	NO	TS/RT	MC
10/20/2005	Oahu	Campbell	Main Road	by tree	594398	2358955	4	5		Solenopsis germinata 25	NO	NO	TS/RT	MC
10/20/2005	Oahu	Campbell	Main Road	by tree	594398	2358955	4	5		Tetramorium simillimum 5	NO	NO	TS/RT	MC
10/20/2005	Oahu	Campbell	Main Road	medial strip	594399	2358971	4	6	n/a	none	n/a	n/a	TS/RT	MC
10/20/2005	Oahu	Campbell	Main Road	medial strip	594402	2358978	4	7	grass	none	n/a	n/a	TS/RT	MC
10/20/2005	Oahu	Campbell	Main Road	medial strip	594405	2358994	4	8	grass	none	n/a	n/a	TS/RT	MC
10/20/2005	Oahu	Campbell	Main Road	medial strip	594406	2359007	4	9	grass	none	n/a	n/a	TS/RT	MC
10/20/2005	Oahu	Campbell	Main Road	medial strip	594407	2359019	4	10	n/a	none	n/a	n/a	TS/RT	MC
HONOLULU INTERNATIONAL AIRPORT (ROGERS BLVD)														
10/24/2005	Oahu	Honolulu	HIA, Rogers Blvd	landscape	612123	2359612	4	1	ground cover	Pheidole megacephala 100	NO	NO	TS/RT	MC

10/24/2005	Oahu	Honolulu	HIA, Rogers Blvd	landscape	612123	2359610	4	2	ti leaf	Pheidole megacephala 150	NO	NO	TS/ RT	MC
10/24/2005	Oahu	Honolulu	HIA, Rogers Blvd	landscape	612122	2359609	4	3	palm tree	Monomorium liliuokalani 25	NO	NO	TS/ RT	MC
10/24/2005	Oahu	Honolulu	HIA, Rogers Blvd	landscape	612122	2359606	4	4	grass	none	n/a	n/a	TS/ RT	MC
10/24/2005	Oahu	Honolulu	HIA, Rogers Blvd	medial strip	612120	2359596	4	5	grass	Monomorium destructor 6	NO	NO	TS/ RT	MC
10/24/2005	Oahu	Honolulu	HIA, Rogers Blvd	medial strip	612120	2359596	4	5	grass	Pheidole megacephala 1	NO	NO	TS/ RT	MC
10/24/2005	Oahu	Honolulu	HIA, Rogers Blvd	landscape	612117	2359577	4	6	ti leaf	Solenopsis germinata 15	NO	NO	TS/ RT	MC
10/24/2005	Oahu	Honolulu	HIA, Rogers Blvd	entrance	612122	2359570	4	7	grass	Solenopsis germinata 1	NO	NO	TS/ RT	MC
10/24/2005	Oahu	Honolulu	HIA, Rogers Blvd	entrance	612117	2359551	4	8	n/a	Monomorium pharaonis 20	NO	NO	TS/ RT	MC
10/24/2005	Oahu	Honolulu	HIA, Rogers Blvd	entrance	612114	2359545	4	9	African tulip	Monomorium pharaonis 15	NO	NO	TS/ RT	MC
10/24/2005	Oahu	Honolulu	HIA, Rogers Blvd	medial strip	612110	2359549	4	10	grass	Solenopsis germinata 50	NO	NO	TS/ RT	MC
HAWAIIAN AIR CARGO STORAGE AREA (ELLIOTT STREET)														
11/7/2005	Oahu	Honolulu	HIA, Haw. Air Cargo	Elliott Street	611272	2359543	4	1	n/a	Anoplolepis gracilipes 12	NO	NO	TS	MC
11/7/2005	Oahu	Honolulu	HIA, Haw. Air Cargo	by pallets	611277	2359542	4	2	n/a	Anoplolepis gracilipes 7	NO	NO	TS	MC
11/7/2005	Oahu	Honolulu	HIA, Haw. Air Cargo	storage area	611281	2359542	4	3	n/a	Tetramorium simillimum 10	NO	NO	TS	MC
11/7/2005	Oahu	Honolulu	HIA, Haw. Air Cargo	by pallets	611283	2359542	4	4	weeds	Monomorium pharaonis 20	NO	NO	TS	MC
11/7/2005	Oahu	Honolulu	HIA, Haw. Air Cargo	parking lot	611286	2359543	4	5	n/a	Tapinoma melanocephalum 100	NO	NO	TS	MC
11/7/2005	Oahu	Honolulu	HIA, Haw. Air Cargo	storage container	611284	2359544	4	6	n/a	Tapinoma melanocephalum 1	NO	NO	TS	MC
11/7/2005	Oahu	Honolulu	HIA, Haw. Air Cargo	storage container	611284	2359544	4	6	n/a	Anoplolepis gracilipes 5	NO	NO	TS	MC
11/7/2005	Oahu	Honolulu	HIA, Haw. Air Cargo	storage container	611284	2359544	4	6	n/a	Monomorium pharaonis 2	NO	NO	TS	MC
11/7/2005	Oahu	Honolulu	HIA, Haw. Air Cargo	parking lot	611285	2359548	4	7	n/a	Tapinoma melanocephalum 20	NO	NO	TS	MC
11/7/2005	Oahu	Honolulu	HIA, Haw. Air Cargo	parking lot	611285	2359548	4	7	n/a	Monomorium pharaonis 4	NO	NO	TS	MC
11/7/2005	Oahu	Honolulu	HIA, Haw. Air Cargo	cargo storage	611285	2359549	4	8	n/a	Monomorium pharaonis 2	NO	NO	TS	MC
11/7/2005	Oahu	Honolulu	HIA, Haw. Air Cargo	cargo storage	611285	2359549	4	8	n/a	Anoplolepis gracilipes 2	NO	NO	TS	MC
11/7/2005	Oahu	Honolulu	HIA, Haw. Air Cargo	by pallets	611287	2359546	4	9	n/a	Monomorium pharaonis 8	NO	NO	TS	MC
11/7/2005	Oahu	Honolulu	HIA, Haw. Air Cargo	by pallets	611281	2359553	4	10	weeds	Monomorium pharaonis 40	NO	NO	TS	MC
COSTCO WHOLESALE STORE														
12/2/2005	Oahu	Honolulu	Costo - Kalihi	around parking lot	617007	2357768	4	1	grass	Pheidole megacephala 25	NO	NO	TS	MC
12/2/2005	Oahu	Honolulu	Costo - Kalihi	around parking lot	617007	2357768	4	2a	grass	Pheidole megacephala 25	NO	NO	TS	MC
12/2/2005	Oahu	Honolulu	Costo - Kalihi	around parking lot	617007	2357768	4	2b	grass	Cardiocondyla emeryi 1	NO	NO	TS	MC
12/2/2005	Oahu	Honolulu	Costo - Kalihi	around parking lot	617007	2357768	4	3	grass	Pheidole megacephala 1	NO	NO	TS	MC
12/2/2005	Oahu	Honolulu	Costo - Kalihi	around parking lot	617007	2357768	4	4	grass	Pheidole megacephala 200	NO	NO	TS	MC
12/2/2005	Oahu	Honolulu	Costo - Kalihi	around parking lot	617007	2357768	4	5	grass	Pheidole megacephala 250	NO	NO	TS	MC
12/2/2005	Oahu	Honolulu	Costo - Kalihi	around parking lot	617007	2357768	4	6	grass	Pheidole megacephala 25	NO	NO	TS	MC
12/2/2005	Oahu	Honolulu	Costo - Kalihi	around parking lot	617007	2357768	4	7	grass	Pheidole megacephala 125	NO	NO	TS	MC
12/2/2005	Oahu	Honolulu	Costo - Kalihi	around parking lot	617007	2357768	4	8	grass	Pheidole megacephala 100	NO	NO	TS	MC
12/2/2005	Oahu	Honolulu	Costo - Kalihi	around parking lot	617007	2357768	4	9	grass	Pheidole megacephala 100	NO	NO	TS	MC
12/2/2005	Oahu	Honolulu	Costo - Kalihi	around parking lot	617007	2357768	4	10a	grass	Pheidole megacephala 25	NO	NO	TS	MC
12/2/2005	Oahu	Honolulu	Costo - Kalihi	around parking lot	617007	2357768	4	10b	grass	Cardiocondyla emeryi 1	NO	NO	TS	MC
HONOLULU INTERNATIONAL AIRPORT (LEI STAND AREA)														
12/12/2005	Oahu	Honolulu	HIA	across post office	611895	2359576	4	1	shower tree	Pheidole megacephala 25	NO	NO	TS/DC	MC
12/12/2005	Oahu	Honolulu	HIA	lei stand, landscape	611887	2359575	4	2	coconut tree	Pheidole megacephala 100	NO	NO	TS/DC	MC
12/12/2005	Oahu	Honolulu	HIA	lei stand, Aolele Street	611891	2359583	4	3	n/a	Pheidole megacephala 150	NO	NO	TS/DC	MC
12/12/2005	Oahu	Honolulu	HIA	lei stand, parking Lot	611868	2359585	4	4	n/a	Pheidole megacephala 100	NO	NO	TS/DC	MC
12/12/2005	Oahu	Honolulu	HIA	nr lei stand, landscape area	611853	2359575	4	5	mulch area	Pheidole megacephala 200	NO	NO	TS/DC	MC
12/12/2005	Oahu	Honolulu	HIA	lei stand, parking Lot	611897	2359578	4	6	grass	Pheidole megacephala 200	NO	NO	TS/DC	MC
12/12/2005	Oahu	Honolulu	HIA	main road, landscape area	611923	2359566	4	7	palm tree	Pheidole megacephala 50	NO	NO	TS/DC	MC
12/12/2005	Oahu	Honolulu	HIA	lei stand, parking Lot	611916	2359564	4	8	weeds	Pheidole megacephala 150	NO	NO	TS/DC	MC
12/12/2005	Oahu	Honolulu	HIA	across post office	611903	2359571	4	9	n/a	Solenopsis sp. 150	NO	NO	TS/DC	MC
12/12/2005	Oahu	Honolulu	HIA	landscape, by water meter	611900	2359564	4	10a	grass	Pheidole megacephala 25	NO	NO	TS/DC	MC
12/12/2005	Oahu	Honolulu	HIA	landscape, by water meter	611900	2359564	4	10b	grass	Leptocelvyis Falcigera	NO	NO	TS/DC	MC
WAIMANALO DISTRICT														
12/13/2005	Oahu	Waimanalo	Turf Grass Nursery	Kaulukanu Street	632311	2360702	4	1	grass	Solenopsis germinata 100	NO	NO	TS/DC	MC

UPDATED SURVEY OF MAP RED IMPORTED FIRE ANTS (RIFA) AS OF DECEMBER 2005



SURVEY SITES

- Kaulukani rifa.shp
- Airport lei stand rifa.shp
- Costco 1 rifa.shp
- Hawaiian air cargo 2 rifa.shp
- Airport 3 rifa.shp
- Campbell industrial park 3 rifa.shp
- Sand island entrance rifa.shp
- Kilauea park rifa.shp
- Aole le st rifa.shp
- Northwest cargo rifa.shp
- Airport terminal rifa.shp
- Campbell 2 rifa.shp
- M i o nursery rifa.shp
- Campbell industrial rifa.shp
- Horizon co rifa.shp
- Toyota lot rifa.shp
- Pier-51 b rifa.shp
- Koolina resort rifa.shp
- Watson, pier-51 rifa.shp
- Waimanalo nursery rifa.shp
- Kapalama rifa.shp
- Nex pearl harbor rifa.shp
- M i lani ag rifa.shp
- Post office rifa.shp
- Airport road rifa.shp
- Iolani palace rifa.shp
- Waimanalo usda rifa.shp
- United airline cargo rifa.shp
- Delta airline rifa.shp
- Lips postal rifa.shp
- Contemporary nursery rifa.shp
- Warren yea nursery rifa.shp
- Bellows beach park rifa.shp
- Kaha point rifa.shp
- UH urban center rifa.shp
- Hawaiian air cargo rifa.shp
- Hnt gate-12 rifa.shp
- Kapalama military rifa.shp
- Pier-39 rifa.shp
- Tgmjnde
- Tl roads.shp

Attachment #2