

Banana lacewing bug

Stephanitis typica (Distant)

ADULT (RULER IN MM)

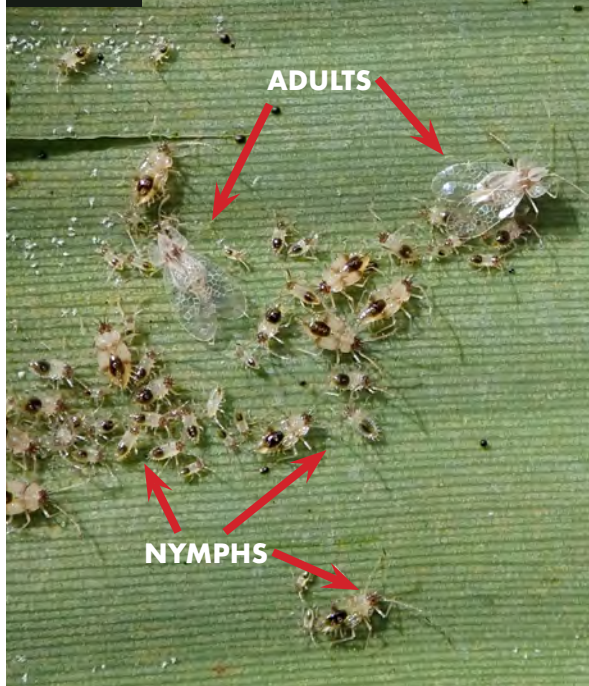


NYMPHS



MULTIPLE LIFE STAGES ON LOWER LEAF

SURFACE.



BANANA LACEWING BUG

SCIENTIFIC NAME: *Stephanitis typica* (Distant)
Hemiptera: Tingidae

FIRST DETECTED: Kāne'ōhe, O'ahu in April 2020. Subsequent surveys found this insect widespread across the island.

LOCATION: Only reported on O'ahu as of July 2021

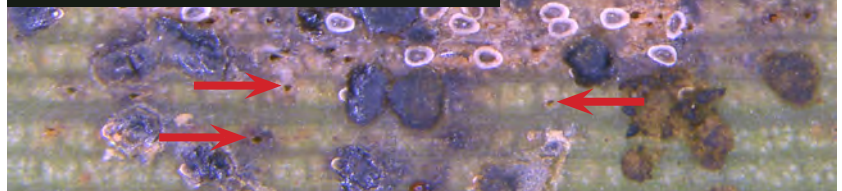
FEEDS ON: *Alpinia* spp. (ginger flowers)
Annona muricata (soursop)
Artocarpus integer (chempedak)
Cinnamomum camphora (camphor laurel)
Cocos nucifera (coconut)
Colocasia spp.
Curcuma longa (turmeric)
Elaeis quineensis (African oil palm)
Elettaria cardamomum (cardamom)
Heliconia spp.*
Musa x paradisiaca (plantain)
Musa spp. (bananas of different varieties)*
Zingiber officinale (edible ginger)

CONCERN: This report represents a new U.S. and Hawai'i State record. Host lists consist of many common and culturally important plants in Hawai'i. In countries such as India, banana lacewing bug is considered an important pest of coconut palms as it may be a vector of a coconut palm disease.

*Found on these host plants in Hawai'i

EGG INSERTION HOLES (ARROWS) ON LOWER LEAF SURFACE

COVERED WITH BLACK EXCREMENT.



Plant Pest Control Branch (PPC)

HDOA.PPC@HAWAII.GOV

HDOA is committed to maintaining an environment free from discrimination, retaliation, or harassment on the basis of race, color, sex, sexual orientation, religion, national origin, age, or disability with respect to any employment, program or activity. For more information, including language accessibility and filing a complaint, please visit HDOA's website at <http://hdoa.hawaii.gov/>



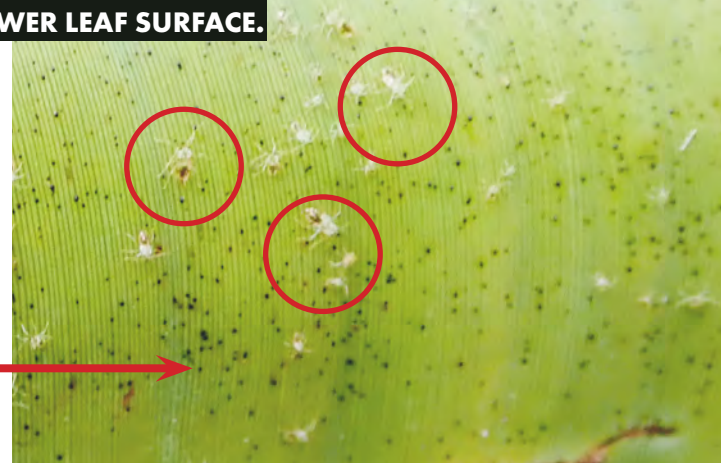
Banana lacewing bug

Stephanitis typica (Distant)

NYPHS AND ADULTS GATHER ON LOWER LEAF SURFACE (CIRCLED).



BLACK SPOTTING AND CAST SKINS (CIRCLED) ON LOWER LEAF SURFACE.



YELLOW STIPPLING/SPECKLING ON UPPER LEAF SURFACE FROM FEEDING BY BANANA LACEWING BUG.



Plant Pest Control Branch (PPC)

HDOA.PPC@HAWAII.GOV

HDOA is committed to maintaining an environment free from discrimination, retaliation, or harassment on the basis of race, color, sex, sexual orientation, religion, national origin, age, or disability with respect to any employment, program or activity. For more information, including language accessibility and filing a complaint, please visit HDOA's website at <http://hdoa.hawaii.gov/>